

Networking Practice-Web Dental Application

Before connecting Practice-Web Dental with other workstations, please make sure to disable any firewalls on the workstation (directions for setting exception in Windows XP SP2 Firewall is provided later in this document).

1. Install DOTNET Framework 1.1 (if not already installed from the CD-ROM) on each workstation.
2. Install and run PW Dental on one computer, usually the server. In PW Dental, go to File | MySQL Configuration. Make sure to set the computer name to the name of your server, and not localhost.
3. Share the program folder, **C:\Program Files\FreeDental** (Open My Computer. Double-click on C:\ then right-click on Sharing. Select share this folder and click OK). Similarly share the C:\FreeDentalImages folder.
4. **Security** - Go to Control Panel and select 'Administrative Tools'. Double-click on 'Microsoft Net Framework 1.1 Wizards'. Double-click on Adjust .Net Security. Click on Next then click on 'Intranet'. Move the slide bar to the top near Full Trust. Then click on Next followed by Finish.
5. Create a shortcut on every workstation's desktop to FreeDental.exe on the server as follows. Right-click on the workstation desktop, select New in the drop down menu then click on Shortcut. Select or type the path to the FreeDental.EXE file For example: \\Server Name \Free Dental\FreeDental.EXE ([\\Server\Free Dental\FreeDental.EXE](#)) Then click on Next and type Practice-Web Dental followed by a click on Finish.

The advantage of using this way of networking is that it makes it much easier to maintain the PW Dental program when it comes to upgrades as you will only need to install the upgrade on the Server and not the workstations. All the workstations will always be running the same version as the Server. If you elect to install PW Dental on all workstations then you will need to install the upgrades on the Server and on all workstations. If a workstation is forgotten then that workstation will not run the most current version of PW Dental and may damage the database.

On each workstation, when PW Dental is first run, the MySQL Configuration dialog will appear. Note: Use server's IP address in place of server name for Domain network.

MySQL Client Configuration

The values below will only be used on this computer. They have to be set on each computer.

Computer Name: The name of the computer where the MySQL server and database are located. If you are running Free Dental on a single computer only, then the computer name may be localhost.

Server

DataBase: usually freedental unless you changed the name.

freedental

User: When MySQL is first installed, the user is root. If your network is exposed, you may need to change this, but you need to change it in MySQL first and then here. See the manual for more details.

root

Password: For new installations, the password will be blank. Only change it here if you have already changed it in MySQL first.

Port: The default is 3306. Only for advanced users.

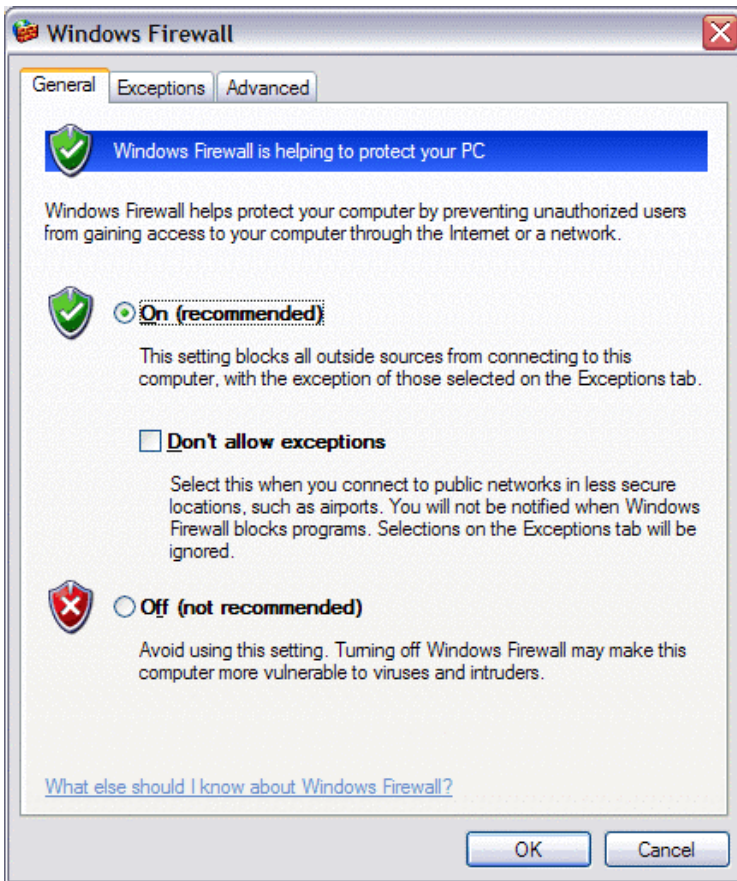
3306

OK

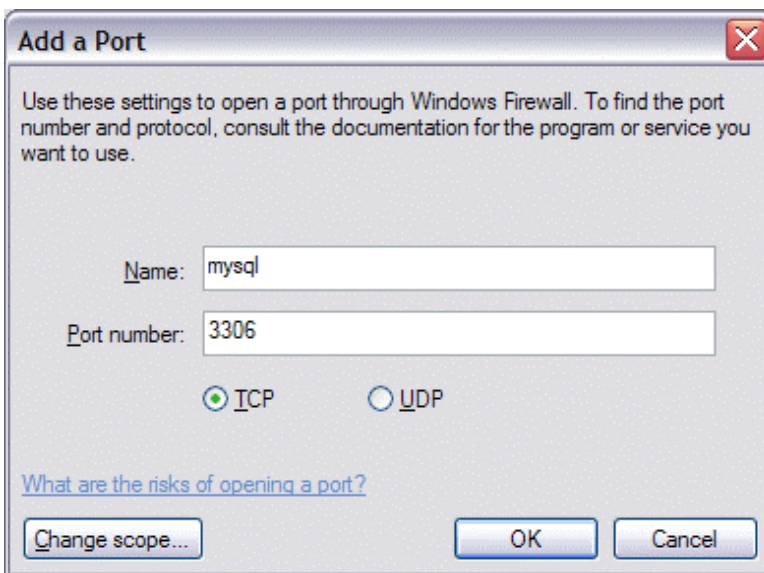
Cancel

In the first field you will need the type in the name of the server, then click on the OK button. This will connect PW Dental to the MySQL database on the server. The path for FreeDentalImages folder should be [\\ServerName\FreeDentalImages\](#)

If you have installed **Windows XP Service Pack 2** on your **server** or stand alone computer, then follow these steps: Go to your Control Panel (from START button) and double-click on Security Center. At the very bottom, double-click on Windows Firewall.



Click on the Exceptions tab.
Click on Add a Port.



Fill out as above and click OK.

Assuming that at least the basic setup information has already been entered in PW Dental on the server, you are now ready to start entering patient accounts, treatment, and appointments.

Troubleshooting the network connection

If you get the following error when setting up the MySQL Configuration dialog, follow these steps.



1. First of all, make sure that you are trying to install on Windows 2000 or Windows XP. The server program will not install on Windows 98 or Windows Me.
2. Next, do you have any anti-virus programs installed that have a built-in software firewall? The firewall must be turned off or at least the settings changed.

Advanced Troubleshooting

Step A. Go to MyComputer and right click (that's the lesser-used button on your mouse). From the menu that comes up, select Manage. Then double click services and applications, then double click Services. Find MySQL in the alphabetical list. If you can't find it, then the MySQL server was not installed correctly. You should redo the installation, making sure to install all items. If you do find MySQL in the list and the status is stopped, then single click on it and select "Restart the service". Then try to run Practice-Web Dental.

Step B. The most likely explanation is that some of your files are accidentally set to read-only. Go to C:\mysql\data and find the folder called FreeDental. Right click on this folder and select Properties. Find the box that says Read-only and click on it until it is completely blank. Then, click OK. When given the choice, apply changes to this folder, subfolders, and files. Also follow the same procedure for the folder called FreeDentalImages on the C: drive. RESTART YOUR COMPUTER. Then try to run Practice-Web Dental.

Sharing folders on the Server

Following applies to Windows XP SP 2 only. On the server, open the windows Explorer and click on Tools Menu. Select Folder Options. Uncheck 'Simple File Sharing' and click Ok.

While in the Explorer, right-click on the folder 'Program Files\Free Dental\' and select properties. Add '**Everyone**' user (if not already) and allow read/write access. Repeat this step for the folder 'FreeDentalImages'.