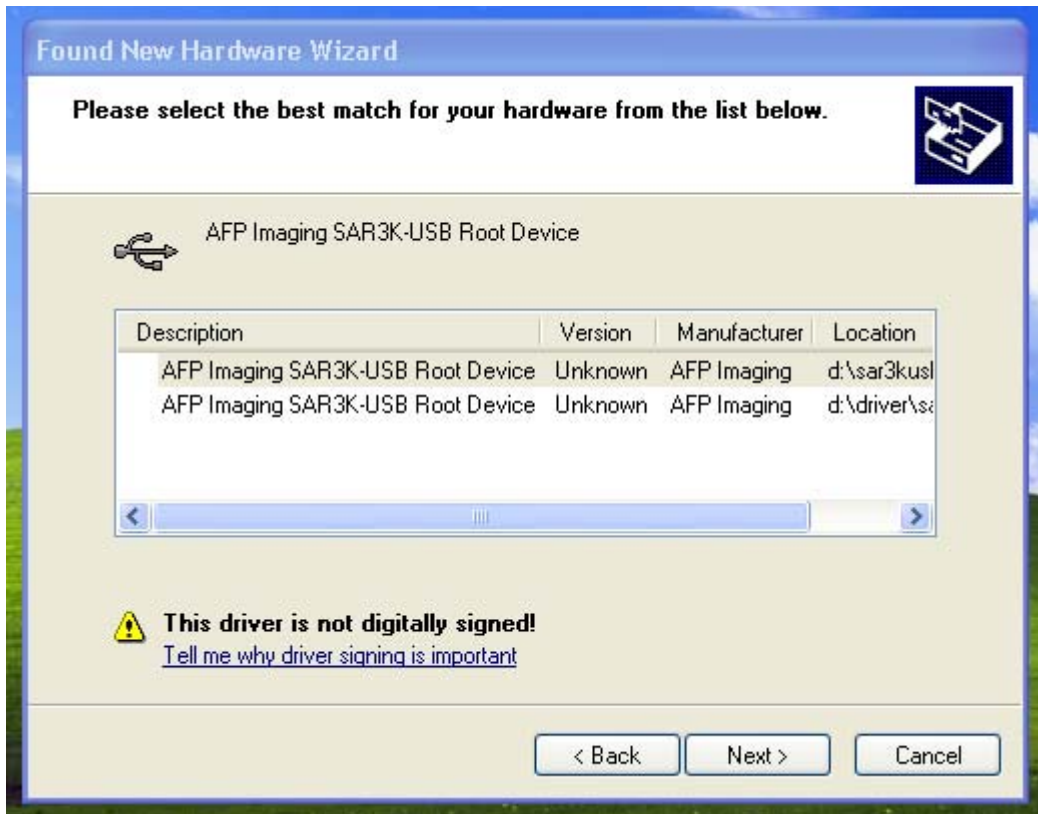


Installation instructions – Eva Hardware

1. Insert the “Eva” CD inside the CD-ROM.
2. Plug the Eva HW into the USB port.
3. The computer will come up with the following message:
“Found new hardware”



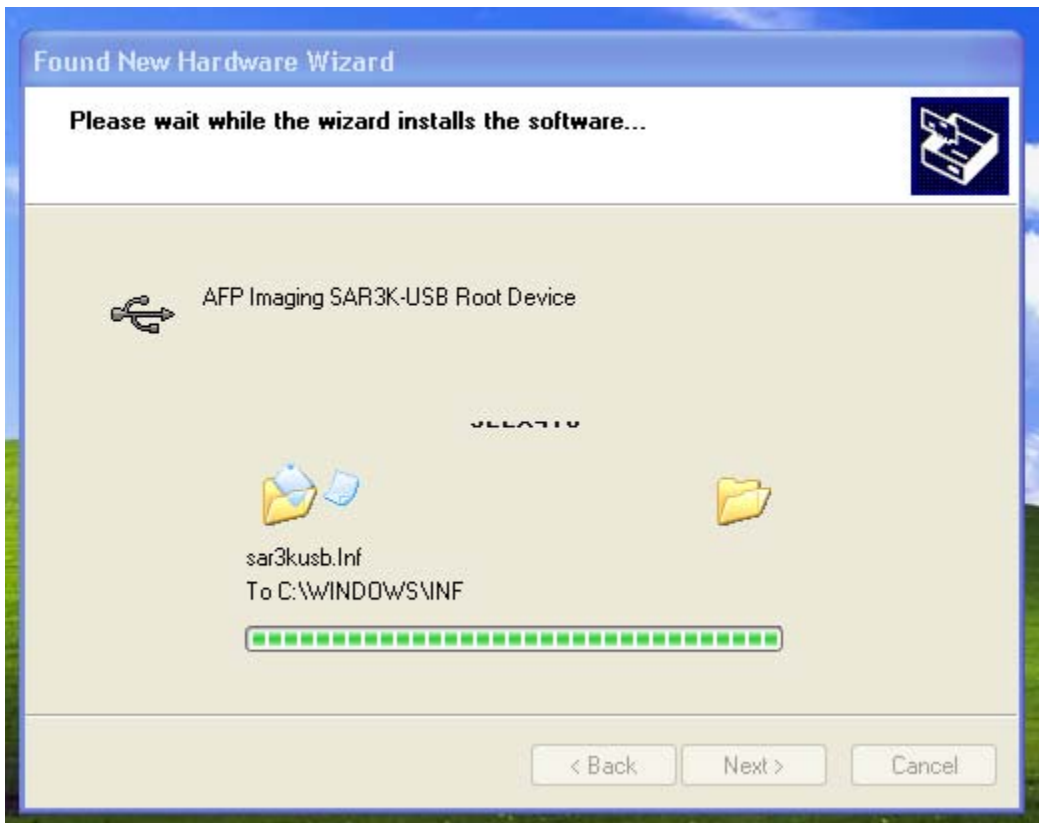
4. Next, a message will appear which asks which driver to choose. Choose the first one from the list with the name “AFP Imaging Corp. – USB Root Driver”.



5. The driver will go through installation of the driver. In Windows XP, the following box will come up:



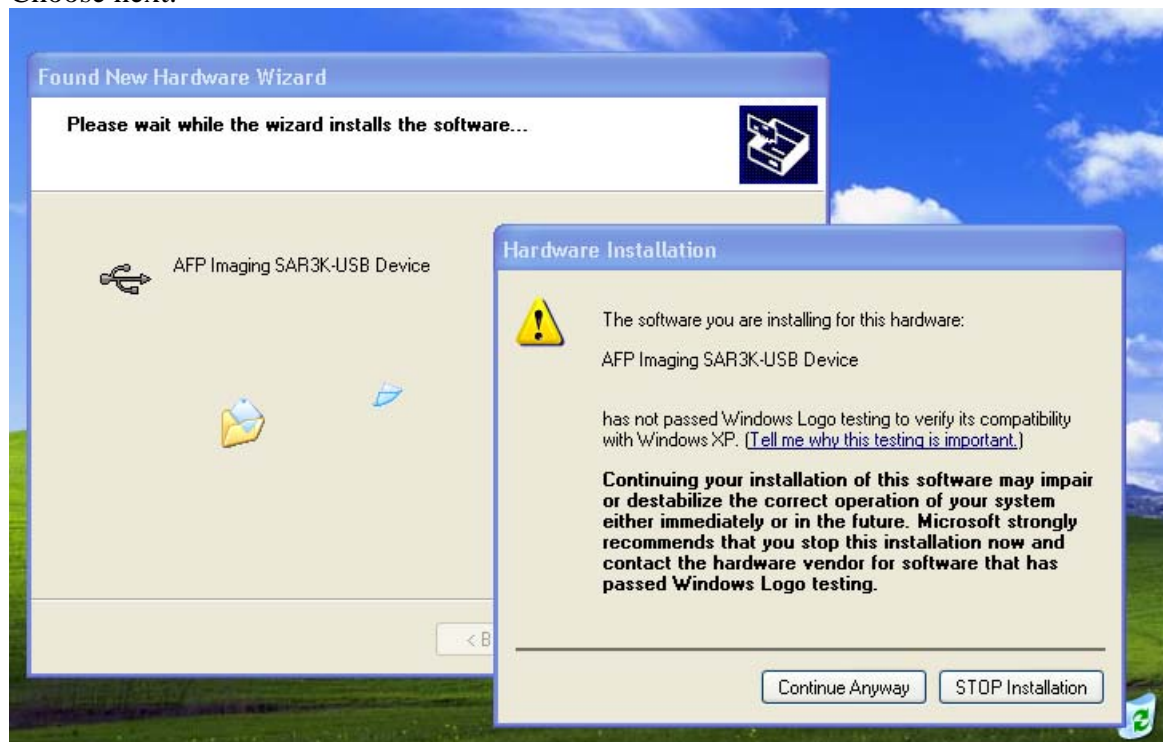
6. Choose "Continue anyway".
7. The installation will continue.



7. When finished, the following message will appear:

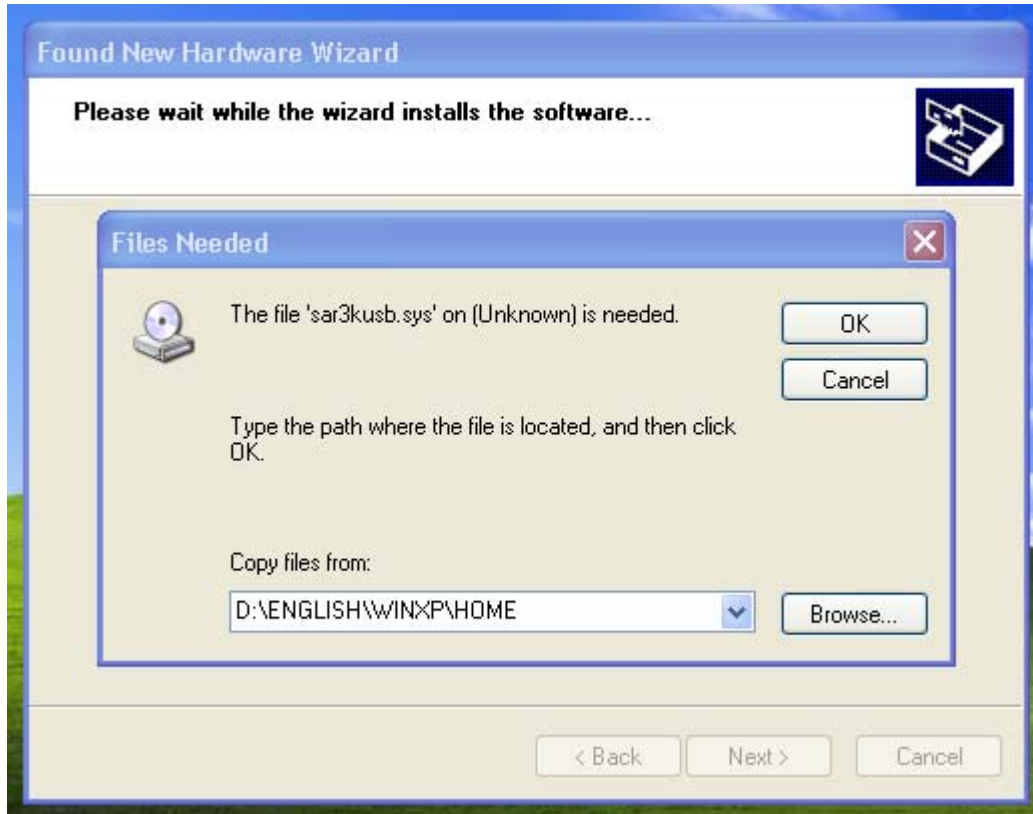


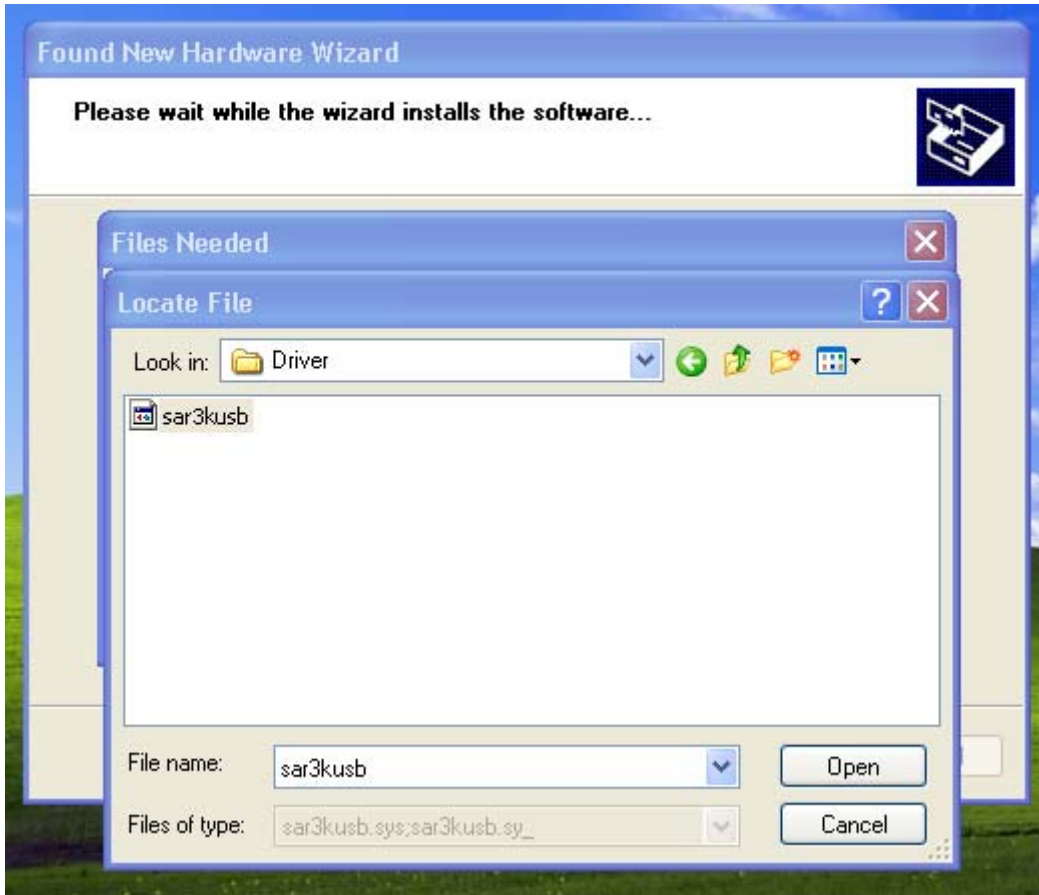
8. Choose next.



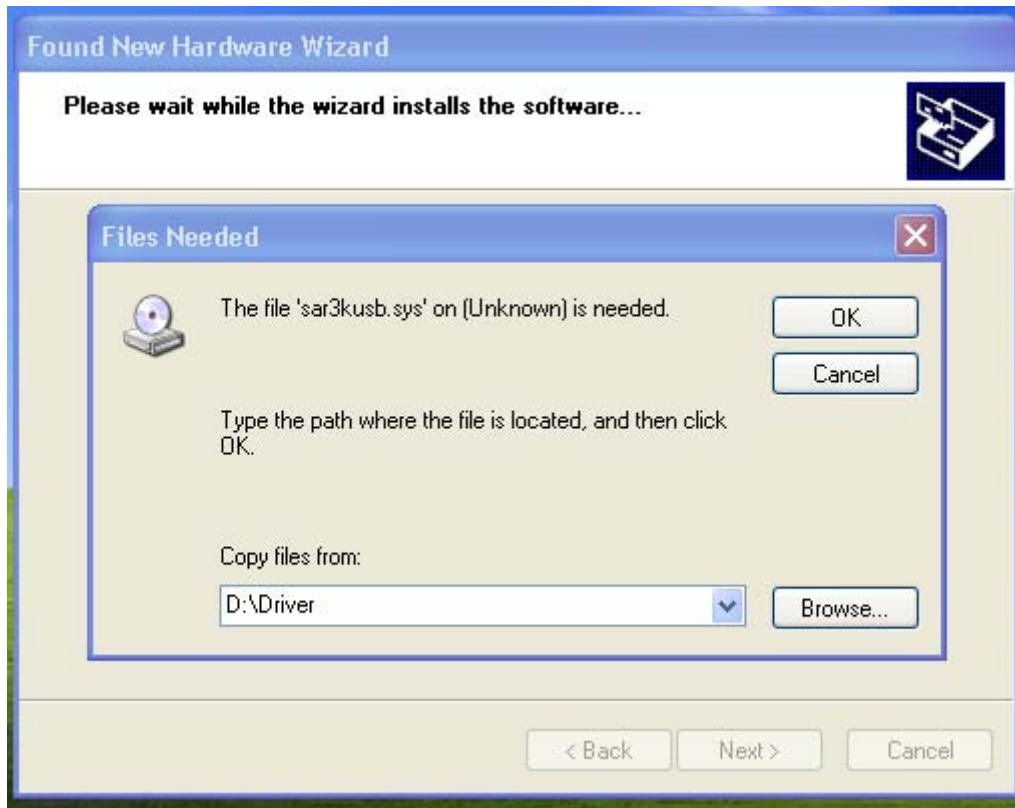
9. On Windows XP the installation warning will reappear. Click on “Continue anyway”.

10. At this point, a message box might appear that will require finding the “sar3kusb.sys”. Please click on browse and go to the “Driver” directory on the CD.





11. A message box might appear that requires the file “sar3kusb.sys”. If so, browse in the “Driver” subdirectory on the CD and locate the file.



11. At this point, the installation will be completing. Click on “Finish” and the installation is done!



If at any point an error occurs, please restart the computer and start the installation from the beginning.

Note: Due to the differences between Windows Operating Systems versions, some of the screens might look different and some of the intermediate screens might be skipped. As long as the installation continues and finishes without error messages, the installation has been successful.

