



I-Max Easy
digital panoramic unit

Saving in digital panoramic imaging



maximum
benefit for
a minimum
investment

The new I-Max Easy digital panoramic unit is the fruit of a perfect combination of recognized simplicity (as already seen in the analog version in use in more than 15,000 practices around the world) and very high precision digitalization.

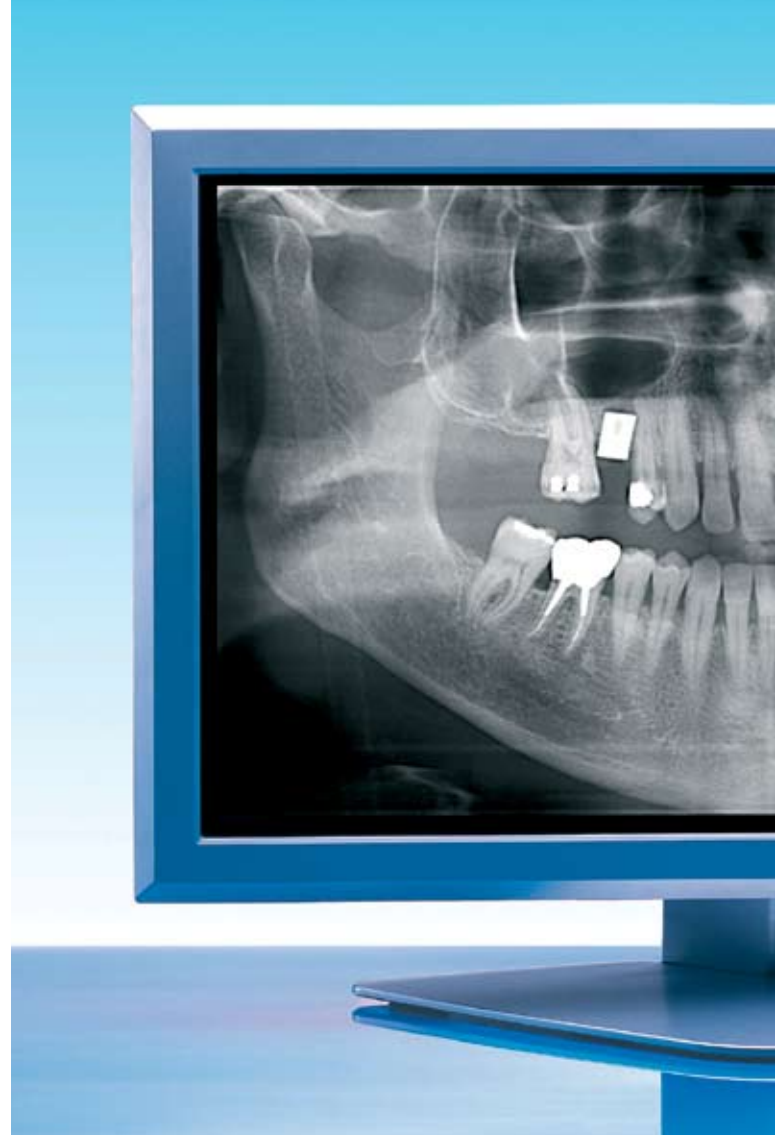


I-Max Easy can be used for all the most common panoramic radiographs:

- Standard adult or child panoramic
- TMJ mouth open or closed
- Sinus

It is fully integrated with QuickVision software, is easy to use, offers effective diagnoses based on digital technology and Owandy image processing - and all at a very advantageous price.

This system meets the most exacting standards of any practice and enhances patient satisfaction.



Higher quality

The image is digitized at source, when the image is taken, to avoid the risk of information loss.

Greater control

Digital technology is very flexible and enables post-compensation of anomalies to "fix" any exposure errors.



I-Max Easy digital panoramic unit



A remarkable capacity for adaptation

With I-Max Easy, sharing resources becomes the key to profitably managing your practice, regardless of its current configuration.

Greater diagnosis precision

Zoom in or out, reverse video, pseudo-colours, etc. QuickVision software can manipulate the image in ways that help you better understand the patient's pathology.

Single-user or network installation

The USB 2.0 interface of the I-Max Easy can be connected easily to any PC with a USB port.

Group practice

The I-Max Easy is supplied with a Compact Flash card that can be used to store images without a PC connection. The removable card can then be taken to any other PC in the practice.

Additional benefits

Going digital will cut out developing costs and associated pollutants, and free up the space previously occupied by the darkroom.

Easier storage

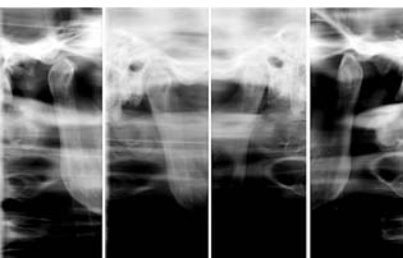
The image is available immediately and stored automatically in the patient file. It can easily be sent over the Internet to a colleague or a health insurance agency, or printed on paper.

Increased safety

The digital sensor technology is more sensitive, allowing the radiation dosage needed to take an image to be significantly reduced.

Instant availability

Once the image is taken, it is instantly available on your computer screen. No more waiting around - the diagnosis is immediate.



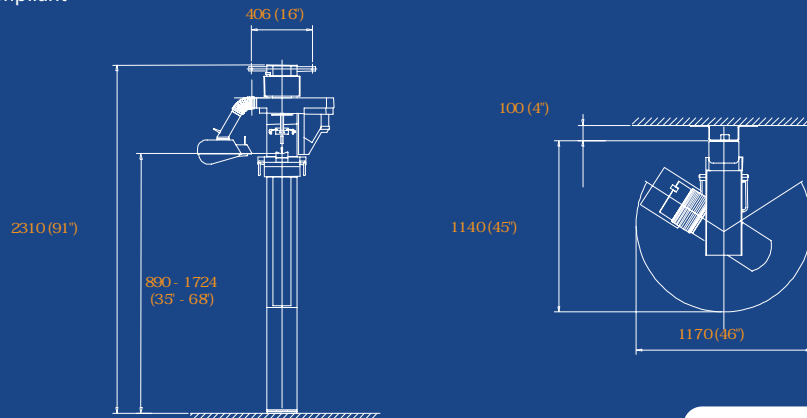
I-Max Easy

digital panoramic unit

Saving
in digital
panoramic
imaging

Technical specifications

Digital sensor	CCD
Pixel size	48 µm
CCD Resolution	10.4/5.2 pixels/mm
Gray levels	4,096 - 12 bits/pixel
Enlargement ratio	1,2
PC Connection	USB 2.0 - 480 MB/sec
Portable storage	Compact Flash card
kV selection	60-85 kVp, (5 kV by 5 kV)
Power	10 mA
Focal length	0.5
Exposure time	Panoramic 17" adult / 14" child TMJ 9,4"
Voltage	220/230/240 Vac (10%)
Single Phase	50 Hz
Absorbed current	5 A @ 230 V
Power consumption	1.15 kVa
Weight	236 kg
EC compliant	



owandy
DENTAL IMAGING SYSTEMS & SOFTWARE

Dealer stamp

Owandy
6, allée Kepler
77420 Champs sur Marne
France
Tel: +33 (0)1 64 11 18 18
Fax: +33 (0)1 64 11 18 10
Email: info@owandy.com
www.owandy.com

DIGITAL SENSORS
PANORAMIC UNITS
CAMERAS
RADIOLOGY EQUIPMENTS
SOFTWARES